



Format
HOMES

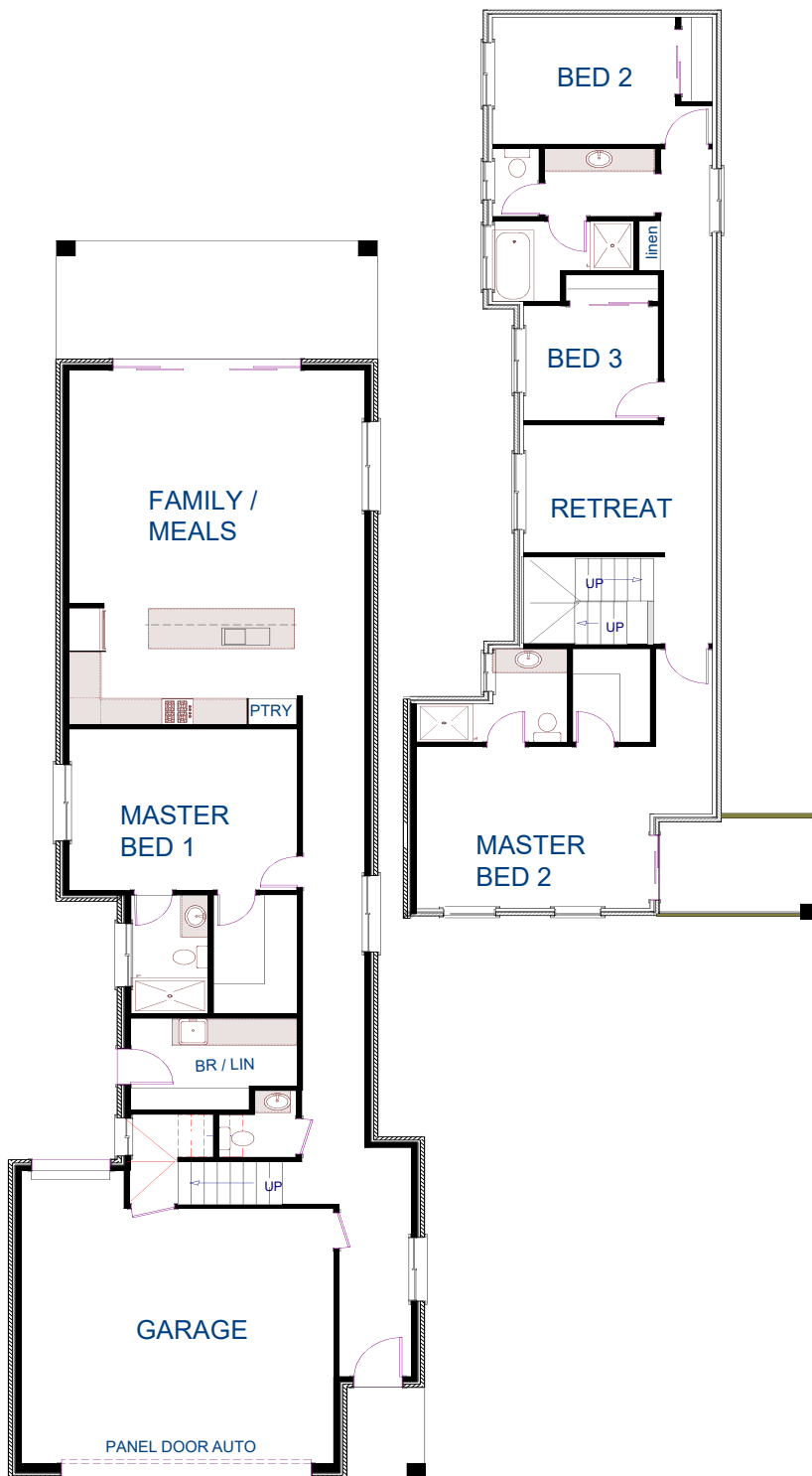
HOUSE & LAND PACKAGE



\$660,365

Lot 51 Fife Street, WOODVILLE SOUTH





- Floor plan and elevation as shown
- Total House Area: 284.5m² (Width: 8m)
- Supaloc steel building system
- 2.7m high ceilings
- 3 bedrooms, all with built-ins
- Master with ensuite and WIR
- Smeg appliances, including dishwasher
- Remote panelift door to garage
- NBN ready
- 3-phase power
- Allowances for paths, driveway & landscaping to front garden
- Allowances for flooring & air conditioning
- Generous footings allowance
- Superior build quality, fittings & Inclusions
- Upgrade package available upon request

Sales Person: **Ruth Verringer**
0407 184 605
ruth.verringer@formathomes.com.au

