



FORMAT HOMES DISPLAY VILLAGE
39 ESPIAL STREET, SEAFORD HEIGHTS



Format
HOMES



dream big build better

Format Homes is a South Australian family business, building great homes for over two decades. We've been awarded South Australia's Best Medium Home Builder five years in a row, and with good reason. The industry and families alike recognise that our customer service, designs and quality are up there with the very best.

We're also proud to offer a higher 'standard'. The features and inclusions we include as standard in our homes are considered luxury options by many other builders.

Take a look around. We welcome your ideas, and we'd like you to view our plans as the perfect starting point towards an amazing custom home.

MAKE YOURSELF AT HOME.





THE POZZANO BY FORMAT HOMES.

Living 210; Garage 40; Porch 6; Alfresco 23 **TOTAL: 279** (30 sqs)
Width 14.7; Depth 21.6



4 BEDS



2 BATHROOMS



WALK-IN
ROBE



LOUNGE



HOME
THEATER



ALFRESCO



BUTLER'S
PANTRY

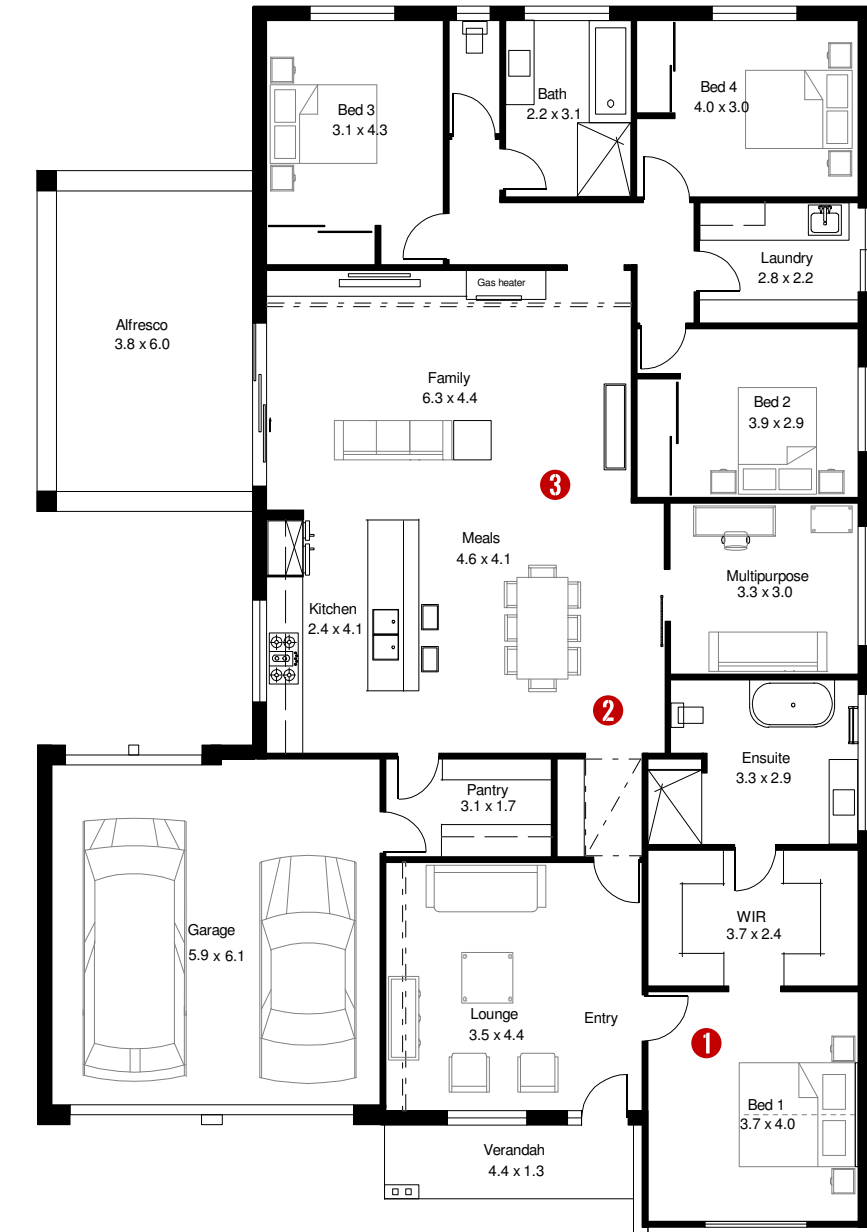


2 CARS

FULL OF GREAT IDEAS FOR BIGGER LIVING.

Generously-sized bedrooms. An enormous walk-in robe and ensuite to the master. A spacious, secluded lounge plus an extra for the kids. And an open plan living area that almost doubles in size when you slide open the doors to the big, breezy Alfresco area.

The Pozzano serves up enough space for everyone to enjoy life on a grand scale, all year round. The Pozzano. Room for everything but compromise.



THE SAVANNAH BY FORMAT HOMES.

Living 180; Garage 37; Porch 5; Alfresco 14 TOT: **236** (25.4 sqs)
Width 11.5; Depth 23.1



4 BEDS



2 BATHROOMS



WALK-IN
ROBE



HOME
THEATER



ALFRESCO

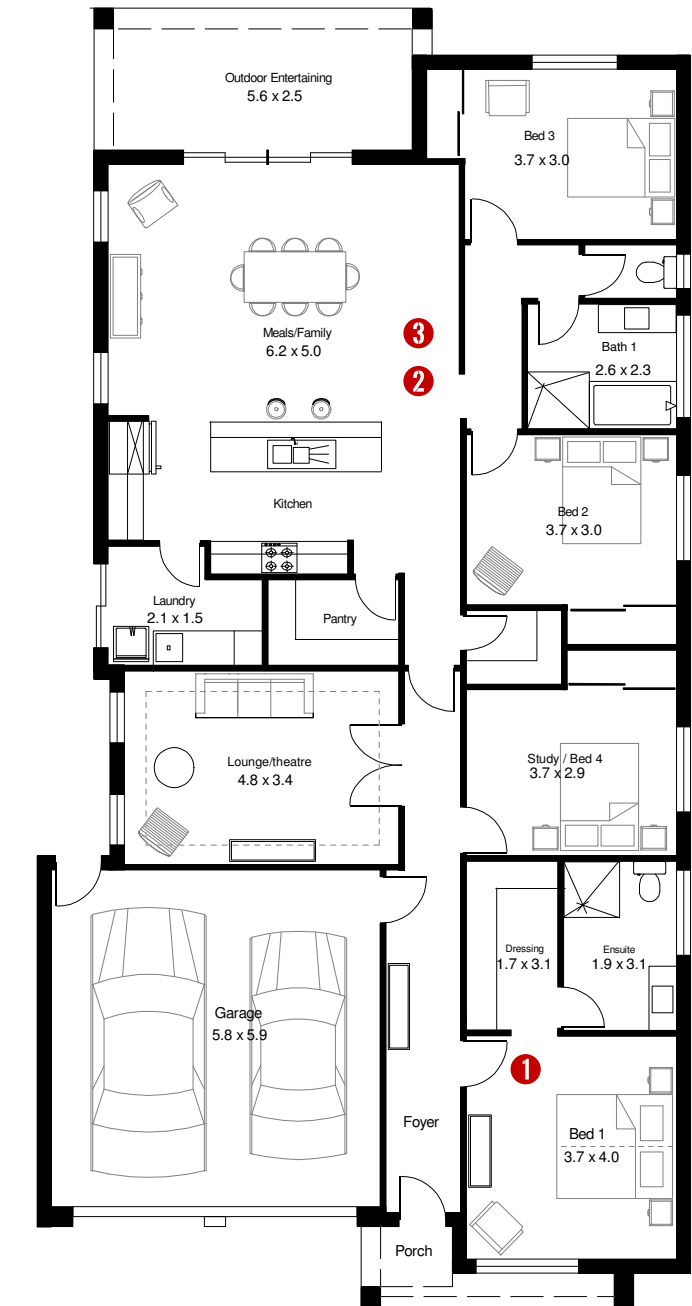


2 CARS

LIVE IT UP, INDOORS AND OUT.

Whether your taste in entertainment runs to movies or barbecues, you'll be right at home in the spacious Savannah. A generous outdoor entertaining area. An enormous lounge or home cinema – it's your choice. Four big bedrooms, two bathrooms and a cook's kitchen looking out onto an open plan living area that puts you right in the heart of your home.

For families that want it all, living well starts with the Savannah.



DREAM BIG, BUILD BETTER

**THE FORMAT HOMES ADVANTAGES DELIVER
PEACE OF MIND AND A HOME YOU'LL BE PROUD OF.**



2000 Homes / 20 years
building experience.



A higher level of standard
inclusions for you to enjoy.



Attention to detail for
your peace of mind.



Every plan custom designed
and flexible to fit your lifestyle.



Commercial strength steel
frames by Truecore.

FORMAT HOMES

252 Grange Road,
Flinders Park, SA 5025

See the Savannah and Pozzano
designs at our Seaford Heights
Display Village at 39 Espial Street.

E sales@formathomes.com.au

W www.formathomes.com.au



Master Builders Licence 165229