

FORMAT HOMES DISPLAY VILLAGE
3 MORTLOCK AVENUE, OLD REYNELLA

 **Format**
HOMES

25
YEARS

2500
CUSTOM HOMES



dream big build better



THE CAREW BY FORMAT HOMES.

Living 219; Garage 38; Porch 10; Alfresco 19 **TOTAL: 286** (30.sqs)
Width 14.1; Depth 23.4



4 BEDS



2 BATHROOMS



1 LIVING AREA



HOME THEATRE



2 CARS



ALFRESCO

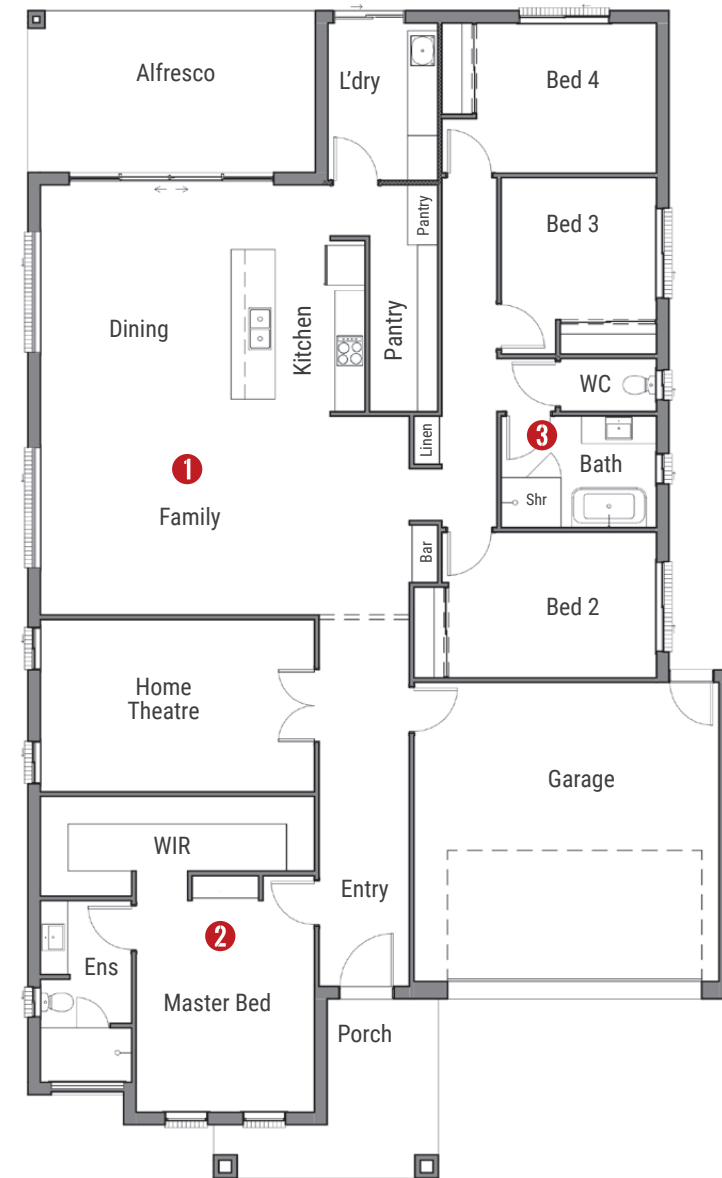
SMART DESIGN THAT BRINGS THE FAMILY TOGETHER

It feels like home from the moment you walk in. The Carew is a place where family moments happen naturally – cooking together, relaxing together, sharing the day. The master suite sits quietly at the front, giving parents a peaceful escape, while the kids' bedrooms are tucked safely at the back.

At the centre of everything, the kitchen connects the open-plan living and dining spaces. It faces the alfresco, so you're never far from laughter, conversation, or the kids playing in the backyard.

There's room to come together and just as much room to find a quiet corner when you need it. A separate home theatre adds even more space for movie nights or lazy Sunday afternoons.

The Carew is built for connection, comfort, and all the little moments that turn a house into a home.



DREAM BIG, BUILD BETTER

**THE FORMAT HOMES ADVANTAGES DELIVER
PEACE OF MIND AND A HOME YOU'LL BE PROUD OF.**



25 years / 2500 Homes
building experience.



A higher level of standard
inclusions for you to enjoy.



Attention to detail for
your peace of mind.



Every plan designed and
flexible to fit your lifestyle.



Commercial strength steel
frames by Truecore.

FORMAT HOMES

252 Grange Road,
Flinders Park, SA 5025

See the Carew design at the
Hurtle Grove Display Village,
3 Mortlock Avenue, Old Reynella.

T 08 8443 4555

E sales@formathomes.com.au

W www.formathomes.com.au

